

PRESS RELEASE | FOR IMMEDIATE RELEASE

# ARTSCIENCE MUSEUM CHARTS NEW FRONTIERS IN IMMERSIVE ART WITH A REVAMPED *teamLab FUTURE WORLD*

*teamLab Future World* debuts a spectacular global-first installation alongside a luminous transformation of *Crystal Universe*



teamLab, *Light Sculpture with Paper Airplane* © teamLab

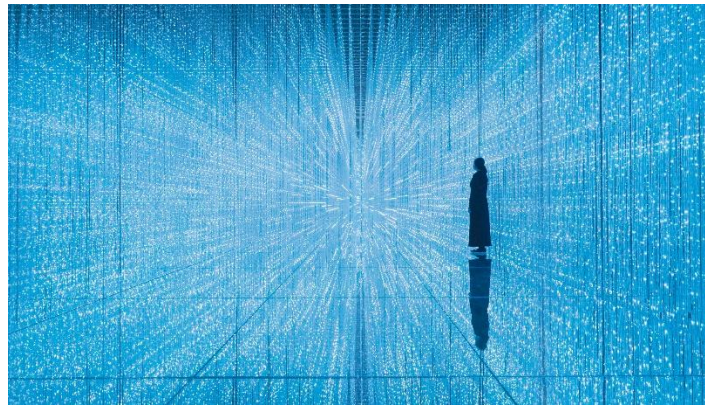
**Singapore** (26 August 2025) — ArtScience Museum is proud to unveil the dramatic transformation of *teamLab Future World*, the much-loved permanent exhibition created in collaboration with renowned international art collective, teamLab. Set to reignite imaginations, the latest evolution of *Future World* promises a bold new era that elevates interactivity to unprecedented heights.

Since opening in 2016, *Future World* has continuously evolved along with the latest developments in art, science and technology. In its most recent transformation, brand new artworks have been installed that transport visitors into fresh digital realms. At the heart of this is two highly anticipated installations that promise moments of pure awe – the global debut of *Light Sculpture with Paper Airplane* and the shimmering enhancement of *Crystal Universe*.

PRESS RELEASE | FOR IMMEDIATE RELEASE

“Over the past eight years, *Future World: Where Art Meets Science* has captivated more than four million visitors and has become a cornerstone of ArtScience Museum. Today, we are thrilled to introduce its most ambitious transformation yet, along with a new name – *teamLab Future World*. This refreshed artwork not only celebrates our longstanding partnership with teamLab but also signals an exciting chapter for the permanent exhibition. This new iteration features a series of remarkable installations that continue to push the boundaries of immersive art. At ArtScience Museum, we are committed to shaping experiences that spark curiosity and wonder, and our collaboration with teamLab has been at the heart of this mission,” said Adrian George, Director, Exhibitions, Programmes and Museum Services, ArtScience Museum at Marina Bay Sands.

The global debut of *Light Sculpture with Paper Airplane* invites visitors to explore further their understand of flight by folding paper airplanes and launching them into the air through *Light Sculpture – Flow*. The trajectory of each paper airplane triggers changes in the sound and laser lights in response to every movement, creating a visual and aural spectacle. Each step and swing of the arm becomes part of a dynamic choreography, as laser beams and melodic tones respond to the actions of each visitor. This crossover between the tangible and the digital immerses visitors in an ever-changing artwork where imagination quite literally takes flight.



teamLab, *Crystal Universe* © teamLab

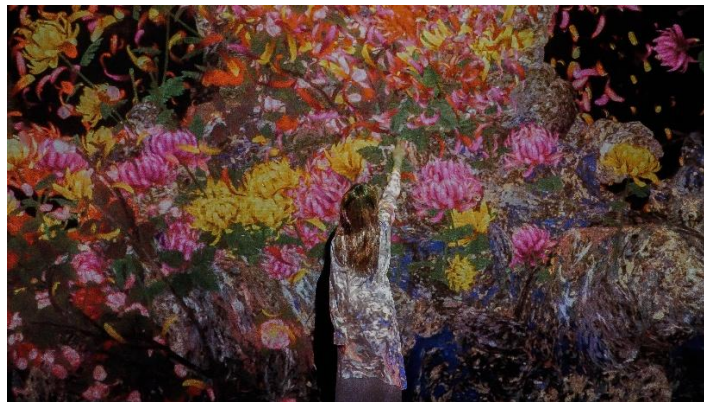
Meanwhile, the enhanced *Crystal Universe* wraps visitors in a dazzling constellation of lights, creating a sense of infinite depth and cosmic wonder. This large-scale, immersive and interactive artwork puts visitors at the heart of the Universe, enabling them to

PRESS RELEASE | FOR IMMEDIATE RELEASE

experience astrophysical phenomena such as planets, stars and galaxies in an entirely new way.

Inspired by Pointillism, a painting technique that uses an accumulation of dots of colour to create a picture, *Crystal Universe* uses points of light to create three-dimensional images in space. Visitors may use their smartphones to access a dedicated website and select different astrophysical phenomena they wish to introduce into the Universe. These selections are then manifested in three-dimensions in the *Crystal Universe*, creating an ever-changing artwork. The presence and position of each visitor actively influences the appearance of the artwork, which in turn responds to the presence of the visitors in the space, creating a continuous cosmic dialogue.

The enhancement introduces a dramatic new perspective, allowing visitors to witness a seemingly endless cascade of crystals and light that blur the boundary between reality and illusion. With its enhancements, this iteration of *Crystal Universe* stands apart from its predecessor, delivering an experience where every step uncovers new vistas of light and reflection.



teamLab, *Continuous Life and Death* © teamLab

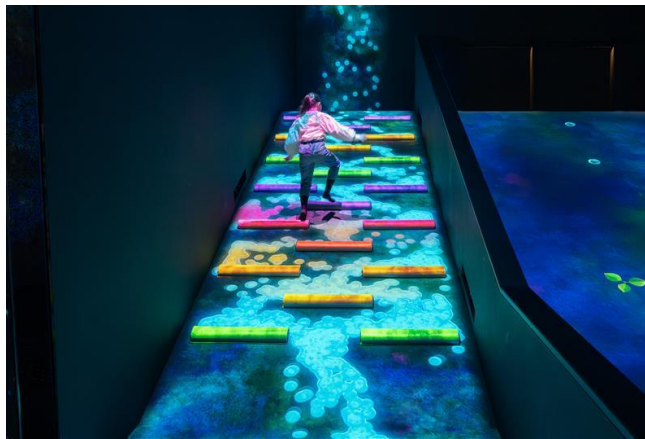
Making its Southeast Asian premiere, *Continuous Life and Death* is a breathtaking, large-scale installation that dissolves the boundaries between art, nature and time. Upon entering, visitors are enveloped by a mesmerising blanket of flowers, each in an endless cycle of blooming and withering. Their vibrant forms shift in real time in response to the natural sunrise and sunset in Singapore, allowing visitors to experience the artwork as a living, ever-changing ecosystem.

PRESS RELEASE | FOR IMMEDIATE RELEASE

No two encounters are the same. As visitors move through the space, their presence causes blossoms to scatter and fade, making each visitor an integral part of the process of creation and dissolution. This extraordinary work invites all to reflect on the interconnectedness of life and the environment, offering a deeply personal yet universally resonant experience.

In the refreshed *Flow Reaches Far* installation, a 'flow' is born the moment a visitor moves through the space. That flow creates an influence that extends far and wide, interacting with the movements of others to form vast, swirling vortices. As more visitors enter, their flows merge and evolve, creating a dynamic environment shaped by collective motion. When the space falls still, the artwork dissolves into silence and emptiness, awaiting the next presence to awaken it.

'Flow' is expressed as a continuum of particles and their trajectories in turn draw lines in three-dimensional space. These lines are then flattened based on teamLab's concept of 'Ultrasubjective Space' – inspired by traditional East Asian painting where boundaries between the physical world and the world of the artwork are dissolved.



teamLab, *Waterfall Droplets, Flowing Down a Slope* © teamLab

The all-time favourite *Sliding Through the Fruit Field* takes on an exciting new dimension with the introduction of *Waterfall Droplets, Flowing Down a Slope*. This enchanting installation transforms the simple act of climbing into a sensory encounter with the essence of water.



PRESS RELEASE | FOR IMMEDIATE RELEASE

As visitors ascend a series of steps, they will witness a digital recreation of water rushing down the slope, breaking apart into individual droplets that appear to bounce and scatter with every movement. This dynamic interaction reveals the delicate balance behind water's fluidity, highlighting how countless droplets unite to form a seamless flow yet are still able to respond individually to the energy around them.



teamLab, *Sketch Umwelt World* © teamLab

Finally, visitors are transported to *Sketch Umwelt World*, where creativity and technology converge. Here, visitors are invited to bring airplanes, dolphins, hawks and butterflies to life by colouring their own designs on paper. With a quick scan, these creations appear on a giant screen, soaring and gliding in vivid three-dimensional detail.

Visitors can also adopt the perspective of their chosen creature (or machine), seeing the world as a butterfly with near 360-degree vision or a dolphin interpreting its environment through echoes and sound. Each viewpoint unlocks a unique sensory universe, launching the act of drawing into a portal for discovery and inviting visitors to explore new frontiers of imagination.

For more details on *teamLab Future World*, please visit <https://www.marinabaysands.com/museum/exhibitions/future-world.html>.

+++

#### About Marina Bay Sands Pte Ltd

Since its opening in 2010, Marina Bay Sands has stood as an architectural marvel and the crown

PRESS RELEASE | FOR IMMEDIATE RELEASE

jewel in Singapore's skyline. Home to the world's most spectacular rooftop infinity pool and approximately 1,850 rooms and suites, the integrated resort offers exceptional dining, shopping, meeting and entertainment choices, complete with a year-round calendar of signature events.

Marina Bay Sands is dedicated to being a good corporate citizen to serve its people, communities and environment. It drives social impact through its community engagement programme, Sands Cares, and leads environmental stewardship through its global sustainability programme, Sands ECO360.

For more information, please visit [www.marinabaysands.com](http://www.marinabaysands.com)

### **About ArtScience Museum**

ArtScience Museum is a major cultural institution in Singapore that explores the intersection between art, science, technology and culture. It is the cultural component of Marina Bay Sands. Since its opening in February 2011, ArtScience Museum has staged large-scale exhibitions by some of the world's major artists, including Leonardo da Vinci, M.C. Escher, Salvador Dalí, Andy Warhol and Vincent Van Gogh, as well as exhibitions that explore aspects of science and technology – including particle physics, big data, robotics, paleontology, marine biology and space science. For more information, please visit [www.marinabaysands.com/museum.html](http://www.marinabaysands.com/museum.html)

### **Media Enquiries**

Christel Tan: +65 8363 5802/ [christel.tan@marinabaysands.com](mailto:christel.tan@marinabaysands.com)

Julia Tan: +65 8380 4031/ [julia.tan@marinabaysands.com](mailto:julia.tan@marinabaysands.com)

Sarina Pushkarna: +65 9298 5728/ [sarina.pushkarna@marinabaysands.com](mailto:sarina.pushkarna@marinabaysands.com)

For hi-res images, please click [[here](#)] (Credit as indicated in the captions)