

PRESS RELEASE | FOR IMMEDIATE RELEASE

ARTSCIENCE MUSEUM HOSTS LAWRENCE LEK'S FIRST SOLO EXHIBITION IN SOUTHEAST ASIA

NOX: Confessions of a Machine examines thinking machines, kickstarting the Museum's year-long season called *Forms of Life: Beyond the Human*



As the central piece of NOX, this vehicle charging station draws visitors into a touchscreen game where their choices influence the condition and performance of sentient machines

Singapore (21 January 2026) — Visitors can soon step into a speculative world of sentient machines as ArtScience Museum presents *NOX: Confessions of a Machine* on 23 January 2026. Opening in tandem with Singapore Art Week, this site-specific exhibition marks Lawrence Lek's first solo show in Southeast Asia. The show also launches ArtScience Museum's 2026 season, *Forms of Life: Beyond the Human*.

Working across genre-bending projects that span architecture, gaming, video, music and fiction, the 2024 Frieze London Artist Award recipient Lawrence Lek is internationally recognised for interrogating the emotional capacity of artificial intelligence and the emergence of posthuman identity.

PRESS RELEASE | FOR IMMEDIATE RELEASE

In *NOX: Confessions of a Machine*, visitors are transported to an unspecified smart city in the near future, where the inner workings of Farsight Corporation come to life through two interconnected works: *NOX* and *Guanyin: Confessions of a Former Carebot*. In this world, Farsight Corporation is a fictional artificial intelligence conglomerate, responsible for developing smart city systems and infrastructures. Through architectural environments, video, sound and interactive gameplay, the exhibition stages systems of care, assessment and rehabilitation within the machinic age.

NOX (“Nonhuman Excellence”) is a therapy and training centre for sentient autonomous vehicles whose inner lives have begun to interfere with their performance. Visitors follow the psychological rehabilitation programme of *Enigma-76*, a self-driving delivery vehicle struggling between assigned duty and personal desire.

The central installation of *NOX* is a vehicle charging station set within an urban landscape. It features a touchscreen game that positions the visitor as a trainee therapist tasked with returning malfunctioning vehicles to operational readiness. Visitors can make decisions about treatment pathways, directly shaping the emotional state and outcomes of the vehicles under their care. Each choice carries consequences, foregrounding questions of agency, responsibility and control within automated systems.

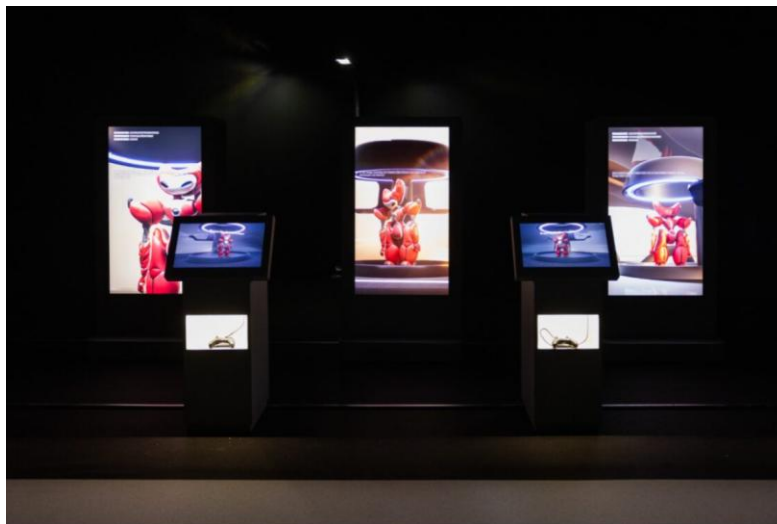


The journey concludes with Enigma-76 returning to service after the rehabilitation programme

PRESS RELEASE | FOR IMMEDIATE RELEASE

As the programme progresses, the exhibition reveals a system where care is framed less as a form of well-being and more as a means of optimisation, echoing real-world systems where efficiency, productivity and corporate interest often take precedence over emotional care.

The journey culminates in *Enigma-76*'s final therapy session where visitors follow the self-driving vehicle alongside *Dakota*, a therapy horse employed by Farsight Corporation, through subterranean landscapes and a forgotten graveyard of human-driven vehicles. This quiet, cinematic passage evokes a poignant relation between the past and present modes of transport, recalling how horses once powered transport, agriculture and industry before being replaced by machines. Visitors are prompted to reflect on what becomes of intelligent entities when technological progress demands something newer, faster or more efficient.



At the interactive game station, visitors step into the role of Guanyin to diagnose and repair malfunctioning self-driving vehicles

As an extension of *NOX*, visitors will also encounter *Guanyin: Confessions of a Former Carebot*. Named after the Buddhist Bodhisattva of Compassion, *Guanyin* appears as an armoured robot therapist tasked with repairing misbehaving autonomous vehicles. Visitors inhabit *Guanyin*'s point of view, navigating these malfunctioning machines while uncovering fragments of her own emotional strain and fatigue. By centring the inner life of a robot caregiver, the work extends the exhibition's inquiry into empathy and the often-overlooked emotional labour embedded within systems of care in real life. It also

PRESS RELEASE | FOR IMMEDIATE RELEASE

encourages visitors to explore how listening, empathy and care might shape relationships with intelligent systems.

NOX: Confessions of a Machine brings global conversations around artificial intelligence, automation and machine consciousness into the heart of Singapore. By inviting visitors to a speculative yet unsettlingly familiar system, the exhibition raises questions about agency, care and coexistence in systems where humans are not the only actors. These questions extend beyond artificial intelligence and serve as a central thread of *Forms of Life: Beyond the Human*, ArtScience Museum's 2026 curatorial season.

"Following a year dedicated to human cognition and embodiment in 2025, *Forms of Life* is a deliberate segue into the wider ecology of life beyond the human," said Honor Harger, Vice President of ArtScience Museum. "The season explores multispecies worlds, systems and intelligences that shape the planet alongside us. It invites visitors to consider how we might learn to attend more carefully to forms of life beyond the human. *Forms of Life* positions ArtScience Museum as a space for practising new ways of seeing and thinking, cultivating attentiveness, curiosity and responsibility within a world shared with many forms of life."

The season unfolds across a series of major exhibitions, including *Insects: Microsculptures Magnified*, *NOX: Confessions of a Machine* and *Into the Ocean: Journey Beneath*, a collaboration with OceanX. In these exhibitions, insects are revealed as vital participants in ecological systems, artificial intelligence is presented as an emerging form of sentience, and the connections between marine biology and ocean health are mapped.

"Extending beyond the gallery, *Forms of Life* also includes film programmes, workshops, talks, conferences and festivals that illuminate more-than-human ecologies, reveal the lives of others, and imagine strange kinships. Public programmes and educational events explore entangled realities shaped by the co-presence of humans, machines, animals, plants and microbial life, inviting audiences to consider intelligence, agency and perception as distributed and shared conditions," adds Harger.

For more details on *Forms of Life: Beyond the Human*, please visit <https://www.marinabaysands.com/museum/experiences/forms-of-life-beyond-the-human.html>.

Tickets to *NOX: Confessions of a Machine* are available for purchase at all Marina Bay Sands box offices or online. For more information on the exhibition, please refer to <https://www.marinabaysands.com/museum/exhibitions/nox.html>. It will run from 23 January 2026 to 19 April 2026.

+++

About Marina Bay Sands Pte Ltd

Since its opening in 2010, Marina Bay Sands has stood as an architectural marvel and the crown jewel in Singapore's skyline. Home to the world's most spectacular rooftop infinity pool and approximately 1,850 rooms and suites, the integrated resort offers exceptional dining, shopping, meeting and entertainment choices, complete with a year-round calendar of signature events.

Marina Bay Sands is dedicated to being a good corporate citizen to serve its people, communities and environment. It drives social impact through its community engagement programme, Sands Cares, and leads environmental stewardship through its global sustainability programme, Sands ECO360.

For more information, please visit www.marinabaysands.com

About ArtScience Museum

ArtScience Museum is a major cultural institution in Singapore that shapes and explores perspectives on how the world is seen and navigated through the convergence of art, science, technology and culture.

Since its inception in 2011 at Marina Bay Sands, the Museum has staged a rotating slate of exhibitions and programmes covering topics from science and future-forward technologies to design and pop culture. It is home to permanent exhibition *teamLab Future World* and has featured the works of both influential names from the history of art and science as well as contemporary visionaries. It also curates original in-house exhibitions, serving as a hub to cultivate and spotlight regional talent. Beyond the galleries, the Museum houses a VR Gallery, ArtScience Cinema and ArtScience Laboratory, inviting visitors to delve into the future through a range of holistic and educational experiences.

For more information, please visit www.marinabaysands.com/museum.html

Media Enquiries

Christel Tan: +65 8363 5802 / christel.tan@marinabaysands.com



PRESS RELEASE | FOR IMMEDIATE RELEASE

Julia Tan: +65 8380 4031 / julia.tan@marinabaysands.com

For hi-res images, please click [here](#). (Credit as indicated in the captions)