

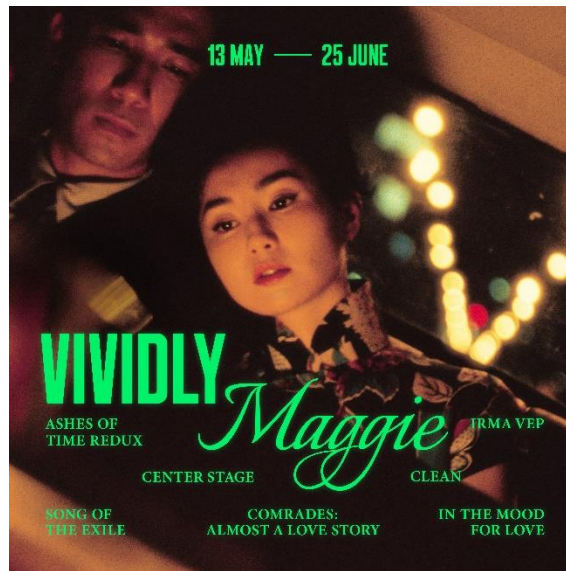
Press Release



FOR IMMEDIATE RELEASE

ArtScience Cinema celebrates the timeless charm of Maggie Cheung

ArtScience Museum will trace the illustrious career of the Asian screen icon through seven curated films in its retrospective 'Vividly Maggie'



SINGAPORE (3 May 2023) – From 13 May to 25 June, ArtScience Museum will leave audiences spellbound by the captivating oeuvre of quintessential Chinese screen icon, Maggie Cheung, through a curated line-up of seven films that have defined her journey to international stardom. Titled *Vividly Maggie*, the retrospective will be hosted at the Museum's Level 4 in-house screening room, ArtScience Cinema, which celebrates its one-year anniversary this month.

Exuding classic beauty and elegance, Maggie Cheung is widely regarded as one of the greatest Asian actresses to have graced the silver screen. Her luminous performances have seen her glide as effortlessly between genres as she does between languages – ranging from wuxia epics to experimental arthouse, and from Cantonese to English to French.

Press Release



During the Hong Kong film boom of the 80s, Maggie transcended stereotypical female wallflower archetypes to become the fresh face of its burgeoning New Wave movement. This sparked a long and close association with renowned director Wong Kar Wai before she broke into the international scene and went on to collaborate with acclaimed French director Olivier Assayas.

Standing out against the western clichés of Asian women, Maggie presents a complex image of contemporary Chinese femininity. She weaves layers of representation into her wide range of radiant and magnetic characters, that not only redefined Asian characterisations in Europe and the West but also eventually led to her milestone achievement as the first Asian woman to win the Cannes Best Actress Award for her performance in Assayas' *Clean* (2004).

Vividly Maggie revisits these turning points in her body of work that have signposted her way to Cannes greatness. From her carefully attuned portrayal of the multi-layered immigrant experience in Ann Hui's rarely shown *Song of the Exile* (1990), and her sultry, fish-out-of-water cheekiness in *Irma Vep* (1996), to her career-defining, reluctant radiance in *Center Stage* (1991), and her portrait of desire and restraint in cult classic *In the Mood for Love* (2000), this retrospective highlights her projects with some of the most sophisticated auteurs in world cinema.

Vividly Maggie invites audiences to witness a mesmerising, versatile, commanding and unique screen presence through a slate of seven films:

- *Song of the Exile* (1990)
- *Center Stage* (1991)
- *Comrades: Almost a Love Story* (1996)
- *Irma Vep* (1996)
- *In the Mood for Love* (2000)
- *Clean* (2004)
- *Ashes of Time Redux* (2008)

"I am so happy to be part of ArtScience Cinema's latest retrospective *Vividly Maggie*, which looks back on several notable films throughout my career. As an actress, I've had the privilege of collaborating with many talented directors and portraying a diverse range of characters. These films remain dear to my heart, and I'm delighted to walk with audiences down memory lane through some deeply cherished performances across my body of work," said Maggie Cheung.

Since moving away from the movie spotlight, the former actress has shifted her focus to philanthropy and music, and can now be seen spinning tunes as a professional DJ.

Meanwhile, ArtScience Cinema marks its one-year anniversary this May after 12 months of feature films, cinematic retrospectives, festival selections, documentaries and more. It opened in 2022 to provide a dedicated home for the Museum's moving image programme. Featuring plush

Press Release





red armchairs and high-quality surround-sound wireless headphones, the screening room delivers an immersive cinematic experience to visitors that adds to their museum-going experience. Since its launch, it has screened over 50 unique films.

Vividly Maggie Films & Showtimes

Film Title	Details
<p>Song of the Exile (1990) Directed by Ann Hui 100 minutes PG</p>  <p><small>© 2017 Fortune Star Media Limited. All Rights Reserved.</small></p>	<p>Set in the early 1970s, <i>Song of the Exile</i> tells the story of Chinese-Japanese student Hui-Yan (Maggie Cheung), who returns after graduating from university in London to her native Hong Kong for the wedding of her younger sister. It doesn't take long for the young woman to discover the vast gulf now separating her from her mother, Aiko (Lu Shao-fen). As Hui-Yan prepares for the wedding, she contends with her mother's animosity for the Western customs she's picked up. In search of answers, Cheung dredges up painful memories of the past that shed light on her mother's resentful behaviour.</p> <p>Showtimes 14 May, Sat 2pm 18 Jun, Sun 11am</p>
<p>Center Stage (1991) Directed by Stanley Kwan 126 minutes NC16 (Some Nudity)</p>  <p><small>© 2017 Fortune Star Media Limited. All Rights Reserved.</small></p>	<p>In the spring of 1935, silent movie star Ruan Ling-yu took her own life, shocking the world. Her funeral was attended by hundreds of thousands of mourning fans. Having entered the film world at the age of 16, she made 29 silent movies and became a screen idol in the short span of 9 years. As she rose to fame, she also rose to infamy with scandals over her private life. Her death at such an early age gave rise to much debate: did she kill herself because of her career? Or for love?</p> <p>With her sensitive portrayal, Maggie Cheung took Ruan's story abroad and won the best</p>

Press Release

	<p>actress award at the 42nd Berlin International Film Festival.</p> <p>Showtimes 13 May, Sat 4.30pm 4 Jun, Sun 2pm 17 Jun, Sat 4.30pm</p>
<p>Comrades: Almost a Love Story (1996) Directed by Peter Chan 118 minutes PG13 (Some Coarse Language and Sexual References)</p> 	<p>Country boy Xiaojun (Leon Lai) moves to Hong Kong, hoping to get rich so that he can send money to his hometown sweetheart and marry her. Xiaojun barely scrapes by in the baffling metropolis, and is lonely until he meets city-slicker Qiao (Maggie Cheung). While she schools him in urban living, the mismatched pair become best friends and eventually have a romantic tryst. Both decide it's wise to forget their passionate night and remain friends, but they still secretly yearn for one another.</p> <p>Showtimes 21 May, Sun 4.30pm 24 Jun, Sat 4.30pm</p>
<p>Irma Vep (1996) Directed by Olivier Assayas 99 minutes M18 (Nudity)</p> 	<p>When a director in decline decides to remake Louis Feuillade's silent serial «Les Vampires», he casts a Hong Kong action heroine who does not speak any French. On the chaotic set, she finds petty intrigues, clashing egos and a wardrobe mistress with a crush on her.</p> <p>Showtimes 14 May, Sun 4.30pm 25 Jun, Sun 11am</p>
<p>In The Mood for Love (2000) Directed by Wong Kar Wai</p>	<p>In bustling 1962 Hong Kong, Chow Mo-Wan moves into a new apartment with his wife. The</p>

Press Release

98 minutes | PG



same day Su Li-Zhen moves in next door with her husband. The two have no real relationship – they pass each other on the stairway going out to get food – until both suddenly grasp that their spouses are having an affair. As they begin meeting to ponder this shared infidelity, Li-Zhen and Mo-Wan start to feel emotions.

Showtimes

13 May, Sat | 11am
20 May, Sat | 7.30pm
28 May, Sun | 2pm
11 Jun, Sun | 11am

Clean (2004)

Directed by Olivier Assayas
110 minutes | NC16 (Some Drug Use)



Junkie Emily Wang (Maggie Cheung) is arrested for heroin possession after her partner, Lee Hauser (James Johnston), fatally overdoses in a Canadian motel room. After serving six months in jail, Emily learns she has lost custody of her son, Jay (James Dennis). Lee's father, Albrecht (Nick Nolte), who has been raising the boy with his wife (Martha Henry), gets in touch with Emily. As she regains contact with her child, she struggles to achieve sobriety, find a job and pursue her singing career.

Showtimes

21 May, Sun | 2pm
3 Jun, Sat | 4.30pm

Ashes of Time Redux (2008)

Directed by Wong Kar Wai
100 minutes | NC16 (Some Violence)

From Director Wong Kar Wai comes the definitive version of *Ashes of Time*, an epic martial arts masterpiece of larger-than-life characters, breathtaking landscapes, and exquisite fight scenes. The story centres on Ouyang Feng (Leslie Cheung), a heartbroken and cynical man who spends his days alone in the desert, connecting expert swordsmen with those seeking revenge and willing to pay for it. Throughout five seasons in exile, as friends

Press Release



and enemies come and go, he reflects upon his solitude.

Showtimes

20 May, Sun | 4.30pm

28 May, Sun | 4.30pm

10 Jun, Sun | 4.30pm

Tickets and Reservations

Tickets are available for purchase at all Marina Bay Sands box offices and online. It is recommended that guests pre-purchase tickets online in advance due to limited capacity and timed entry of the films.

	STANDARD TICKET (SGD)	SRL TICKET (SGD)	ARTSCIENCE FRIENDS TICKET (SGD)
Adult	12	10.70	9.40
Concession	10	8.90	7.80

For more information on *Vividly Maggie*, please visit <https://www.marinabaysands.com/museum/events/vividly-maggie.html>

###

About Marina Bay Sands Pte Ltd

Marina Bay Sands is Asia's leading business, leisure and entertainment destination. The integrated resort features Singapore's largest hotel with over 2,200 luxurious rooms and suites, crowned by the spectacular Sands SkyPark and iconic infinity pool. Its stunning architecture and compelling programming, including state-of-the-art convention and exhibition facilities, Asia's best luxury shopping mall, world-class dining and entertainment, as well as cutting-edge exhibitions at ArtScience Museum, have transformed the country's skyline and tourism landscape since it opened in 2010.

Marina Bay Sands is dedicated to being a good corporate citizen to serve its people, communities and environment. As one of the largest players in hospitality, it employs more than 10,000 Team Members across the property. It drives social impact through its community engagement programme, Sands Cares, and leads environmental stewardship through its global sustainability programme, Sands ECO360.

For more information, please visit www.marinabaysands.com

About ArtScience Museum

Press Release



ArtScience Museum is a major cultural institution in Singapore that explores the intersection between art, science, technology and culture. It is the cultural component of Marina Bay Sands. Since its opening in February 2011, ArtScience Museum has staged large-scale exhibitions by some of the world's major artists, including Leonardo da Vinci, M.C. Escher, Salvador Dalí, Andy Warhol and Vincent Van Gogh, as well as exhibitions that explore aspects of science and technology – including particle physics, big data, robotics, palaeontology, marine biology and space science. For more information, please visit www.marinabaysands.com/museum.html

Media Enquiries

Julia Tan: +65 8380 4031/ julia.tan@marinabaysands.com
Sarina Pushkarna: +65 9298 5728/ sarina.pushkarna@marinabaysands.com

For hi-res images, please click [here](#). (Credit images as indicated in the captions)